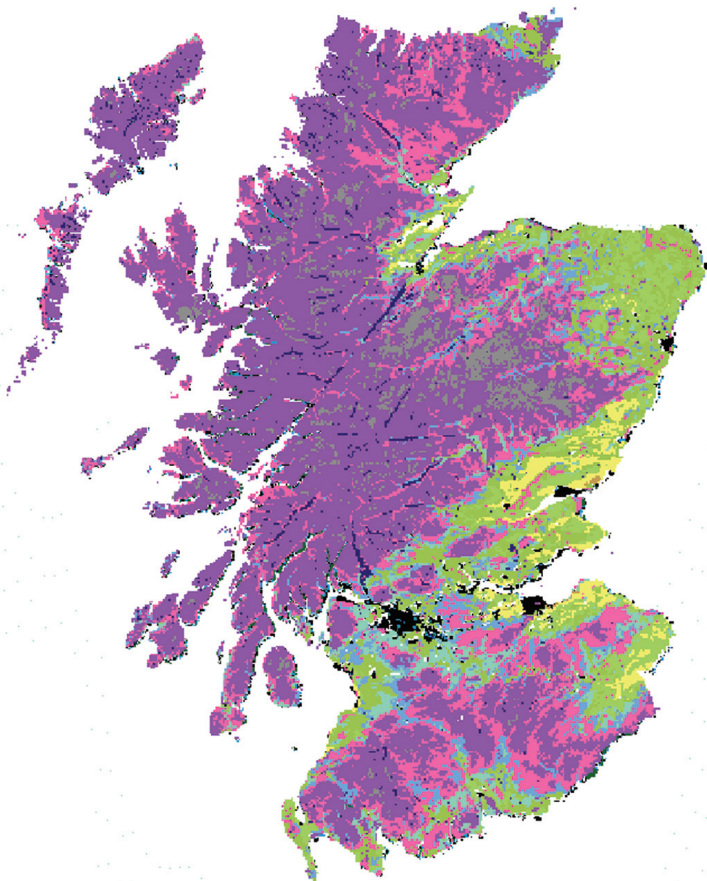


Land capability for agriculture in Scotland

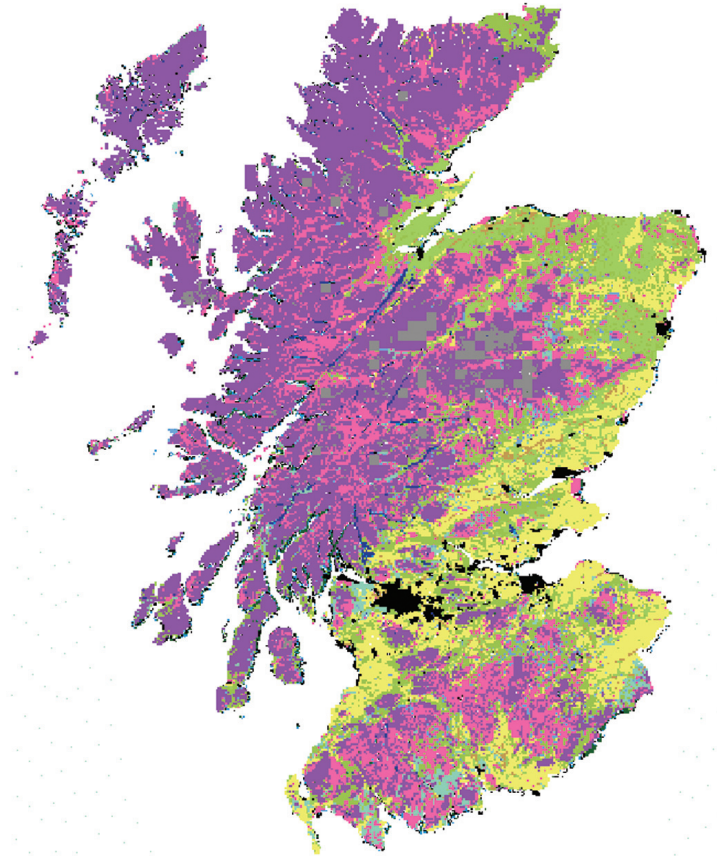
Land is classified on a scale of 1 to 7 using factors such as climate, soil properties (texture, depth, stoniness etc.) and slope. Classes 1, 2 and 3.1 are defined as 'prime agricultural land' with a semi-protected status in the planning system.

In the future, there is potential for many areas to move to a higher class meaning new opportunities for agriculture. However, increased risks from drought, wetness and erosion would also require changes in land management.

ORIGINAL PUBLISHED MAP



2050 SCENARIO



* Based upon the UKCIP02 Med-High Scenario and excluding any local downgrading due to soil droughtiness or wetness factors

LAND CAPABILITY

	Class 1	Very wide range of crops		Class 4.2	Narrow range of crops
	Class 2	Wide range of crops		Class 5	Improved grassland
	Class 3.1	Moderate range of crops		Class 6	Rough grazing
	Class 3.2	Moderate range of crops		Class 7	Very limited agricultural value
	Class 4.1	Narrow range of crops			

We are currently developing a new series of Land Capability maps incorporating climate change and improved soils data.