

GILDED Research – You can help out!

Scientists working on the GILDED project are studying the connections between people's values and beliefs, and the amount of energy that their household uses.

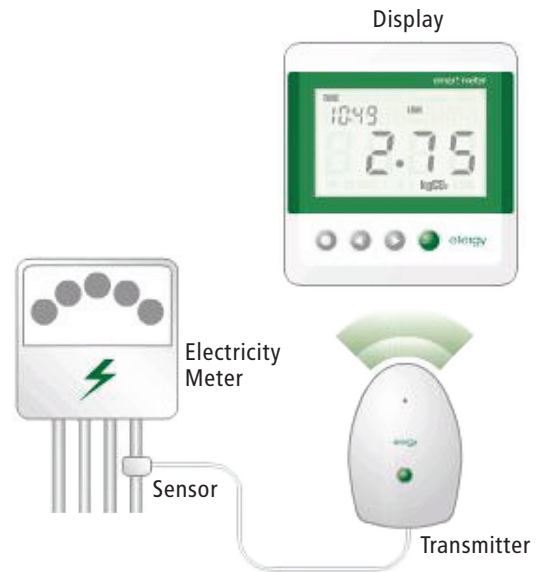
You can help by filling in a questionnaire about your household.

Completed questionnaires will be entered in a prize draw for the chance to win an Effergy Energy Saving Meter!!!

What is an 'energy saving meter'?

An energy saving meter, also known as a 'smart meter' clips onto the power cable entering your home, sending signals to a monitor which displays how much electricity is being used..

You can use this monitor to see how much energy you use when you turn on a light or appliance. The EU government is considering making it compulsory for all homes to have one of these devices installed.



EXAMPLES FROM THE QUESTIONNAIRE:

- 1 What comes to mind when you think of energy and the future?
- 2 Some people say that our consumption of energy is related to climate change. What is your view on this?
- 3 How do you see your own life with regard to energy consumption? What are your own most important activities and habits in terms of energy use, in your daily life?

What will happen with the information?

Responses from the surveys will be analysed to detect any common responses. These will help us measure the connections between values, beliefs, lifestyle choices and energy reducing actions.

Your responses will also help us see whether these initial survey questions should be used in larger surveys we are conducting this summer.

All questionnaire responses will be kept anonymous. We only need your name and contact information if you wish to enter the free prize draw so we can let you know if you've won the prize. We will not use your contact information for any other purpose.

If you would like to see the results of the survey, these will be displayed on our website: gildedeu.org