

David Miller¹, Lorna Dawson¹, Karl Ritz² and the GIMI Network³

¹Macaulay Institute, Craigiebuckler, Aberdeen, AB15 8QH UK

²Cranfield University, Cranfield, Bedfordshire, MK43 0AL UK

³www.macaulay.ac.uk/geoforensic

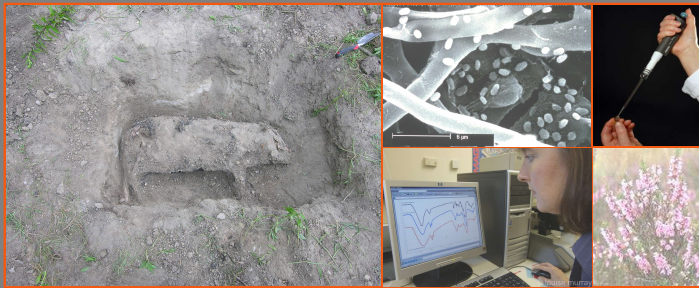
Aims

To identify and evaluate needs and options for methods of measurement, interpretation, analysis and communication of physical evidence.

Network Initiatives

Comparison of Analytical Techniques

Comparison of analysis methods on soil samples from burial sites being shared between Canada, USA, New Zealand, Australia and the UK (Macaulay Institute, Queen's University Belfast and Bradford University).

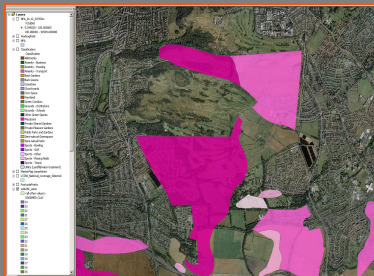


(Courtesy of Dr Shari Forbes, University of Ontario Institute of Technology, Canada)

Spatial Databases and Communications

What should be recorded at crime scenes for collective discussions?

Representing scenes of crime for communications between expert and lay audiences using virtual reality tools.



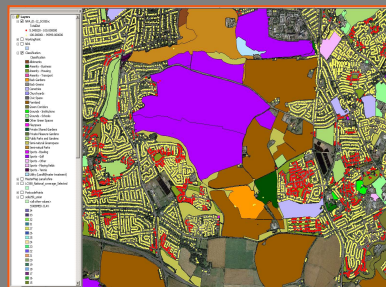
Aerial photograph of new housing estate and soils (darker colour equals increased % clay)



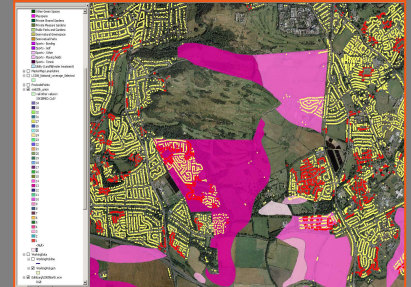
© louise murray

What can spatial databases offer for intelligence gathering?

Linking spatial databases of land use, with soils, house addresses and access. The examples below are of an area of Edinburgh.



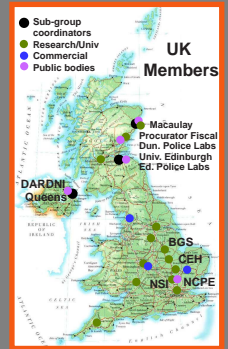
Parks and gardens and addresses within 100m of entrances



Combining soils and address data

(Copyright: Ordnance Survey, Crown Copyright)

Network Membership



Stakeholder Requirements and Knowledge Transfer

The network is being exploited for information exchange between experts, stakeholders and the general public.



Media:
Interview on ITV News



Demonstrations:
BGS Mobile Forensics Lab



Ground Penetrating Radar
In Geoforensics
Guest Lecture:
Dr David Nobes, New Zealand



Conferences and workshops

David Miller¹, Lorna Dawson¹, Karl Ritz² and the GIMI Network³

¹Macaulay Institute, Craigiebuckler, Aberdeen, AB15 8QH UK, ²Cranfield University, Cranfield, Bedfordshire, MK43 0AL UK, ³www.macaulay.ac.uk/geoforensic

Aims

To identify and evaluate needs and options for methods of measurement, interpretation, analysis and communication of physical evidence.

Network Initiatives

Comparison of Analytical Techniques
Comparison of analysis methods on soil samples from burial sites being shared between Canada, USA, New Zealand, Australia and the UK (Macaulay Institute, Queens University Belfast and Bradford University).



(Courtesy of Dr Shari Forbes, University of Ontario Institute of Technology, Canada)

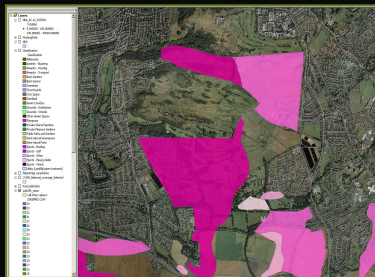
Spatial Databases and Communications



© louise murray

What should be recorded at crime scenes for collective discussions?

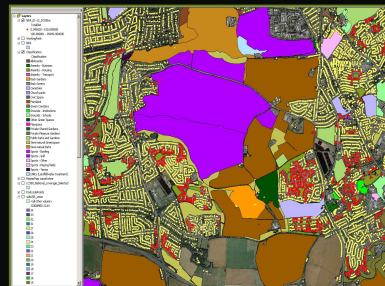
Representing scenes of crime for communications between expert and lay audiences using virtual reality tools.



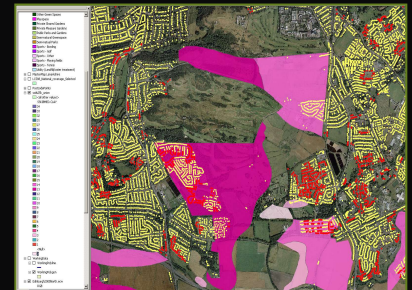
Aerial photograph of new housing estate and soils (darker colour equals increased % clay)

What can spatial databases offer for intelligence gathering?

Linking spatial databases of land use, with soils, house addresses and access. The examples below are of an area of Edinburgh.



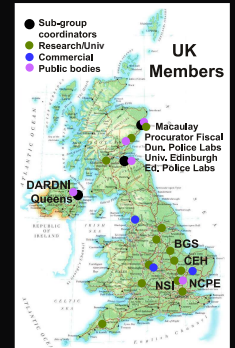
Parks and gardens and addresses within 100m of entrances



Combining soils and address data

(Copyright: Ordnance Survey, Crown Copyright)

Network Membership



Stakeholder Requirements and Knowledge Transfer

The network is being exploited for information exchange between experts, stakeholders and the general public.



Media:
Interview on ITV News



Demonstrations:
BGS Mobile Forensics Lab



Ground Penetrating Radar In Geoforensics
Guest Lecture:
Dr David Nobes, New Zealand



Conferences and workshops