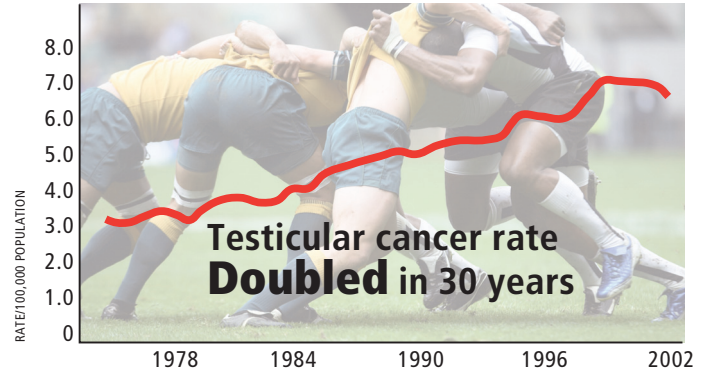
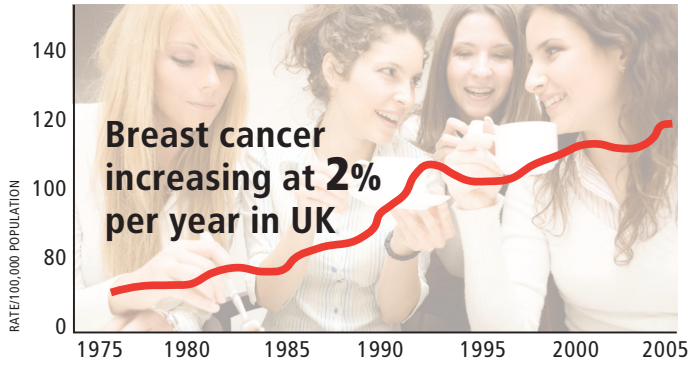


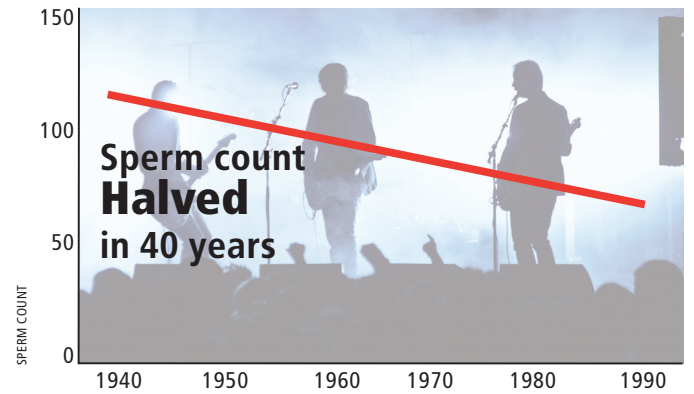
What do pollutants do?

In Humans...



Implicated in increased incidence of –

- Asthma
- Attention deficit hyperactivity disorder (ADHD)
- Obesity
- Heart disease



In Wildlife...

Pollutants may be the cause of –

- Decline in birds of prey in 1960s
- World-wide decline in amphibian numbers
- Phocid distemper in seals in Moray Firth in 1990s
- Same sex pairings of gulls in Thames Estuary
- Abnormal reproductive organs in Florida alligators
- Development of female reproductive organs in male fish near sewage outfalls
- Declines in numbers of – Otters? Dolphins? Honey bees?

